

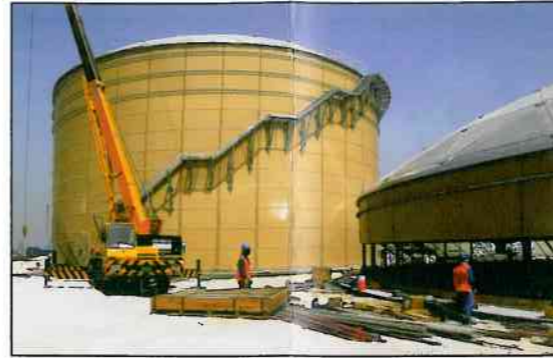
HEIGHT

Model Height Reference
Actual Wall Height (mm) - From Top of Top Angle to Bottom of Bottom Angle
of Rings in tank

Engineered Storage Products Company
Aquastore® and TecStore™ Tank Capacity Chart
Capacities in Cubic Meters

Model	Sheets per Ring	Actual liters/mm		Capacity (mm)				
		Diameter (mm)	Wall Height	5	9	14	19	23
202	72	61 428	2 964	1 473	2 870	4 266	5 663	7 060
204	73	62 282	3 047	1 473	2 870	4 266	5 663	7 060
207	74	63 135	3 131	1 473	2 870	4 266	5 663	7 060
210	75	63 988	3 216	1 473	2 870	4 266	5 663	7 060
213	76	64 841	3 302	1 473	2 870	4 266	5 663	7 060
216	77	65 694	3 390	1 473	2 870	4 266	5 663	7 060
218	78	66 548	3 478	1 473	2 870	4 266	5 663	7 060
221	79	67 401	3 568	1 473	2 870	4 266	5 663	7 060
224	80	68 254	3 659	1 473	2 870	4 266	5 663	7 060
227	81	69 107	3 751	1 473	2 870	4 266	5 663	7 060
230	82	69 960	3 844	1 473	2 870	4 266	5 663	7 060
232	83	70 813	3 938	1 473	2 870	4 266	5 663	7 060
235	84	71 667	4 034	1 473	2 870	4 266	5 663	7 060
238	85	72 520	4 130	1 473	2 870	4 266	5 663	7 060
241	86	73 373	4 228	1 473	2 870	4 266	5 663	7 060
244	87	74 226	4 327	1 473	2 870	4 266	5 663	7 060
246	88	75 079	4 427	1 473	2 870	4 266	5 663	7 060
249	89	75 932	4 528	1 473	2 870	4 266	5 663	7 060
252	90	76 786	4 631	1 473	2 870	4 266	5 663	7 060
255	91	77 639	4 734	1 473	2 870	4 266	5 663	7 060
258	92	78 492	4 839	1 473	2 870	4 266	5 663	7 060
260	93	79 345	4 945	1 473	2 870	4 266	5 663	7 060
263	94	80 198	5 051	1 473	2 870	4 266	5 663	7 060
266	95	81 051	5 160	1 473	2 870	4 266	5 663	7 060
269	96	81 905	5 269	1 473	2 870	4 266	5 663	7 060
272	97	82 758	5 379	1 473	2 870	4 266	5 663	7 060
274	98	83 611	5 491	1 473	2 870	4 266	5 663	7 060
277	99	84 464	5 603	1 473	2 870	4 266	5 663	7 060
280	100	85 317	5 717	1 473	2 870	4 266	5 663	7 060
283	101	86 170	5 832	1 473	2 870	4 266	5 663	7 060
286	102	87 024	5 948	1 473	2 870	4 266	5 663	7 060
288	103	87 877	6 065	1 473	2 870	4 266	5 663	7 060
291	104	88 730	6 183	1 473	2 870	4 266	5 663	7 060
294	105	89 583	6 303	1 473	2 870	4 266	5 663	7 060
297	106	90 436	6 424	1 473	2 870	4 266	5 663	7 060
300	107	91 290	6 545	1 473	2 870	4 266	5 663	7 060
302	108	92 143	6 668	1 473	2 870	4 266	5 663	7 060
305	109	92 996	6 792	1 473	2 870	4 266	5 663	7 060
308	110	93 849	6 918	1 473	2 870	4 266	5 663	7 060
311	111	94 702	7 044	1 473	2 870	4 266	5 663	7 060
314	112	95 555	7 171	1 473	2 870	4 266	5 663	7 060
316	113	96 409	7 300	1 473	2 870	4 266	5 663	7 060
319	114	97 262	7 430	1 473	2 870	4 266	5 663	7 060
322	115	98 115	7 561	1 473	2 870	4 266	5 663	7 060
325	116	98 968	7 693	1 473	2 870	4 266	5 663	7 060
327	117	99 821	7 826	1 473	2 870	4 266	5 663	7 060
330	118	100 674	7 960	1 473	2 870	4 266	5 663	7 060
333	119	101 528	8 096	1 473	2 870	4 266	5 663	7 060
336	120	102 381	8 232	1 473	2 870	4 266	5 663	7 060
339	121	103 234	8 370	1 473	2 870	4 266	5 663	7 060
341	122	104 087	8 509	1 473	2 870	4 266	5 663	7 060
344	123	104 940	8 649	1 473	2 870	4 266	5 663	7 060
347	124	105 793	8 790	1 473	2 870	4 266	5 663	7 060
350	125	106 647	8 933	1 473	2 870	4 266	5 663	7 060
353	126	107 500	9 076	1 473	2 870	4 266	5 663	7 060
355	127	108 353	9 221	1 473	2 870	4 266	5 663	7 060
358	128	109 206	9 367	1 473	2 870	4 266	5 663	7 060
361	129	110 059	9 514	1 473	2 870	4 266	5 663	7 060
364	130	110 913	9 662	1 473	2 870	4 266	5 663	7 060
367	131	111 766	9 811	1 473	2 870	4 266	5 663	7 060
369	132	112 619	9 961	1 473	2 870	4 266	5 663	7 060
372	133	113 472	10 113	1 473	2 870	4 266	5 663	7 060
375	134	114 325	10 265	1 473	2 870	4 266	5 663	7 060
378	135	115 178	10 419	1 473	2 870	4 266	5 663	7 060
381	136	116 032	10 574	1 473	2 870	4 266	5 663	7 060
383	137	116 885	10 730	1 473	2 870	4 266	5 663	7 060

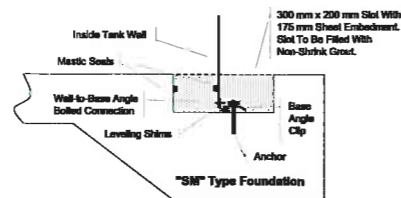
DIAMETER



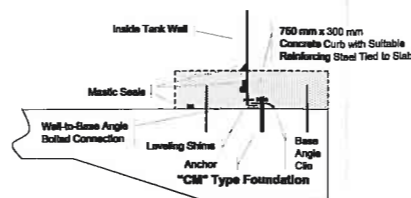
Notes to Capacity Charts:

- > Model Number => Diameter/Height. Example: Model "39/36" is 11.937m diameter and 11.231m high. If adding extension sheets, add corresponding letter to model number (i.e. "37/36A")
- > Height is from bottom of bottom angle to top of top angle - and assumes a 2"x2"x1/4" (50x50x6mm) bottom angle and a 3"x3"x1/4" (75x75x6mm) top angle.
- > No allowance is made for internal concrete floor or freeboard. Diameters are "construction expanded" diameters.
- > Intermediate capacities are available by using "extension" sheets and starter rings. See chart below for details. Add appropriate letter to model number as noted above.
- > Capacities are in cubic meters. Volume (in liters) per mm of height is shown for each diameter to facilitate the calculation for net capacity.
- > Charts are for general information only. Site specific design, wind, seismic, foundation and roof conditions, design codes and coatings will limit applicable sizes.
- > Wall height adjustment guidelines:
 - For standard SS and MS starter ring foundations, add 227 mm to wall height
 - For standard SF foundation, add 433 mm to wall height
 - For standard SM foundation, deduct 175 mm from wall height
 - For Extension Ring "A" size, add 215 mm to wall height
 - For Extension Ring "B" size, add 430 mm to wall height
 - For Extension Ring "C" size, add 591 mm to wall height

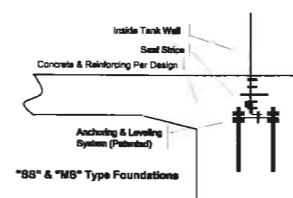
Typical Foundation Layout Details



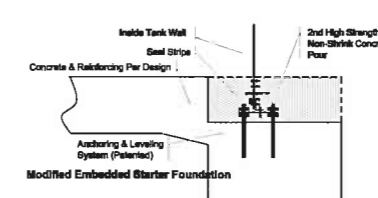
Slot Mount (SF)



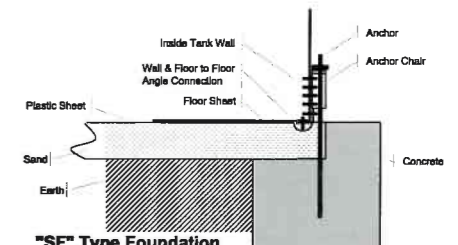
Curb Mount (CM)



Embedded Short/Mid Starter (SS/MS)



Modified Embedded Starter (MES)



Steel Floor (SF)